

Accessories——One-Touch Fittings

One-touch fittings—tube-tube type



Ordering code

Same diameter type fittings

NPE 1/4

①

②

① Model

NPM: Bulkhead union



NPE: Union tee



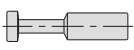
NPLM: Bulkhead male elbow



NPY: Union "Y"



NPP: Plug



NPV: Union elbow



NPZ: Cross



NPU: Straight union



② Port size

5/32: Φ5/32"
1/4: Φ1/4"
5/16: Φ5/16"
3/8: Φ3/8"
1/2: Φ1/2"

PE 6

①

②

① Model

PM: Bulkhead union



PE: Union tee



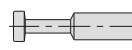
PLM: Bulkhead male elbow



PY: Union "Y"



PP: Plug



PV: Union elbow



PZ: Cross



PU: Straight union



② Port size

4: Φ4mm
6: Φ6mm
8: Φ8mm
10: Φ10mm
12: Φ12mm

Different diameter type fittings

NPG 1/4 - 5/32

①

②

③

① Model

NPG: Different diameter straight



NPZG: Different diameter cross



NPEW: Different diameter tee



NPYW: Different diameter union "Y"



NPGJ: Plug-in reducer



NPEG: Different diameter tee



NPKG: Reducer triple branch union



NPHK: Universal reducer triple branch union



NPHD: Universal reducer four branch union



② Port size

1/4: Φ1/4"
5/16: Φ5/16"
3/8: Φ3/8"
1/2: Φ1/2"

③ Port size

5/32: Φ5/32"
1/4: Φ1/4"
5/16: Φ5/16"
3/8: Φ3/8"

PEG 6 - 4

①

②

③

① Model

PG: Different diameter straight



PZG: Different diameter cross



PEW: Different diameter tee



PYW: Different diameter union "Y"



PGJ: Plug-in reducer



PEG: Different diameter tee



PKG: Reducer triple branch union



PHK: Universal reducer triple branch union



PHD: Universal reducer four branch union



② Port size

4: Φ4mm
6: Φ6mm
8: Φ8mm
10: Φ10mm
12: Φ12mm

③ Port size

4: Φ4mm
6: Φ6mm
8: Φ8mm
10: Φ10mm

Accessories——One-Touch Fittings

One-touch fittings—tube-tube type

Table for interface port and tube O.D.

Product series	Port size				
	Φ5/32"	Φ1/4"	Φ5/16"	Φ3/8"	Φ1/2"
NPE, NPY, NPV, NPU NPM, NPLM, NPP, NPZ	•	•	•	•	•

Product series	Port size I	Port size II			
		Φ5/32"	Φ1/4"	Φ5/16"	Φ3/8"
NPG NPGJ	Φ1/4"	•			
	Φ5/16"		•		
	Φ3/8"		•	•	
	Φ1/2"			•	•
NPEG NPEW NPYW	Φ1/4"	•			
	Φ5/16"		•		
	Φ3/8"			•	
	Φ1/2"			•	•
NPZG	Φ1/4"	•			
	Φ5/16"		•		
	Φ3/8"			•	
	Φ1/2"				•
NPKG	Φ1/4"	•			
	Φ5/16"		•		
	Φ3/8"			•	
NPHK NPHD	Φ5/16"		•		
	Φ3/8"			•	

Product series	Port size				
	Φ4	Φ6	Φ8	Φ10	Φ12
PE, PY, PV, PU PM, PLM, PP, PZ	•	•	•	•	•

Product series	Port size I	Port size II			
		Φ4	Φ6	Φ8	Φ10
PG PGJ	Φ4				
	Φ6	•			
	Φ8	•	•		
	Φ10		•	•	
	Φ12			•	•
PEG PEW PYW	Φ4				
	Φ6	•			
	Φ8		•		
	Φ10			•	
PZG	Φ12			•	•
	Φ4				
	Φ6	•			
	Φ8		•		
PKG	Φ10			•	
	Φ12			•	•
	Φ4				
	Φ6	•			
PHK PHD	Φ8		•		
	Φ10			•	
	Φ12			•	
	Φ4				

Specification

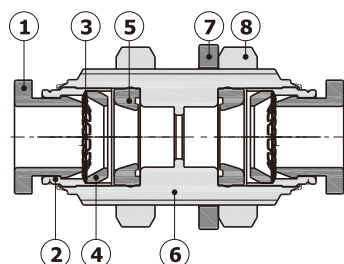
Operating pressure range	0~145psi(0~1.0MPa)
Negative pressure	10Torr(-750mmHg)
Proof pressure	215psi(1.5MPa)
Ambient and fluid temperature	-5~160°F(-20~70°C)
Applicable tubing	Soft nylon or polyurethane

Product feature

1. Variable models can be widely used in every kind of pneumatic systems.
2. High circulation performance: bear the same flow with the volume of the tubing inside diameter.
3. Connect tubing easily and conveniently.
The tubing connection portion is safe and durable.

Inner structure

NPM,PM Series



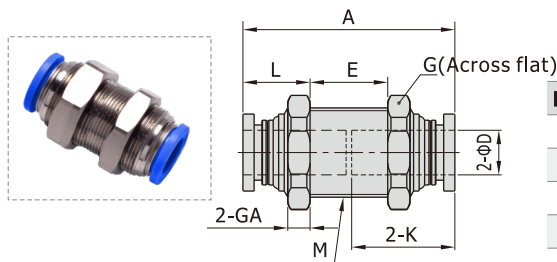
No.	Item
1	Release button
2	Guide
3	Spring gasket
4	Chuck
5	O-ring
6	Body
7	Rubber washer
8	Nut

Accessories——One-Touch Fittings

One-touch fittings—tube-tube type

Dimensions

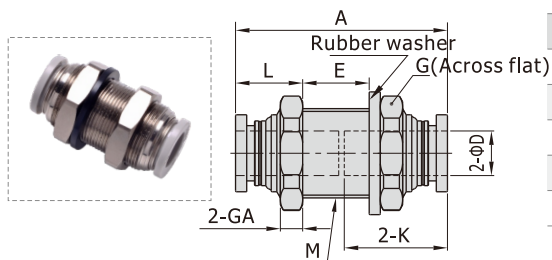
NPM Series



[Unit: inch]

Model\Item	ΦD	M	A	K	L	E	G	GA	Weight(g)
NPM5/32	5/32	1/2-20 UNF	1.08	0.53	0.37	0.28	9/16	0.22	6.2
NPM1/4	1/4	9/16-18 UNF	1.34	0.65	0.41	0.43	11/16	0.22	9.5
NPM5/16	5/16	5/8-18 UNF	1.50	0.73	0.49	0.43	3/4	0.22	15.7
NPM3/8	3/8	7/8-14 UNF	1.69	0.83	0.49	0.63	1	0.28	22.5
NPM1/2	1/2	7/8-14 UNF	1.83	0.91	0.53	0.69	1	0.28	29.5

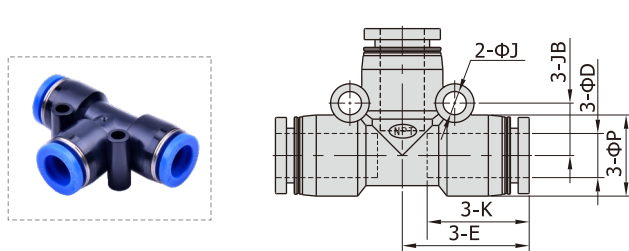
PM Series



[Unit: mm]

Model\Item	ΦD	M	A	K	L	E	G	GA	Weight(g)
PM4	4	M12X1	29	14	10	7	14	4	6.2
PM6	6	M14X1	34	16.5	10.5	11	17	4	9.5
PM8	8	M16X1	38	18.5	11.5	13	19	4	15.7
PM10	10	M20X1	43	21	12.5	16	24	5	22.5
PM12	12	M22X1	46.5	23	13.5	17.5	27	6	29.5

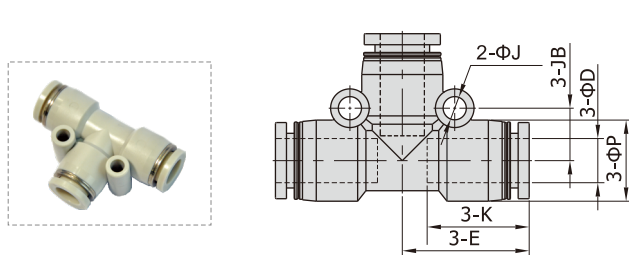
NPE Series



[Unit: inch]

Model\Item	ΦD	ΦP	K	E	ΦJ	JB	Weight(g)
NPE5/32	5/32	0.35	0.53	0.63	0.13	0.26	3.1
NPE1/4	1/4	0.49	0.65	0.79	0.13	0.31	6.1
NPE5/16	5/16	0.59	0.73	0.91	0.17	0.37	8.8
NPE3/8	3/8	0.71	0.83	1.04	0.17	0.43	13.8
NPE1/2	1/2	0.83	0.91	1.18	0.17	0.51	21.0

PE Series



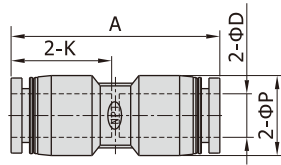
[Unit: mm]

Model\Item	ΦD	ΦP	K	E	ΦJ	JB	Weight(g)
PE4	4	9	14	17	3.2	6.5	3.1
PE6	6	12.5	16.5	20	3.2	8	6.1
PE8	8	15	18.5	23	4.3	9.5	8.8
PE10	10	18	21	26.5	4.3	11	13.8
PE12	12	21	23	30	4.3	13	21

Accessories——One-Touch Fittings

One-touch fittings—tube-tube type

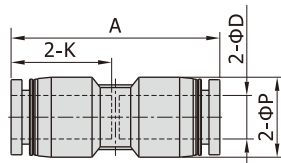
NPU Series



[Unit: inch]

Model\Item	ΦD	ΦP	K	A	Weight(g)
NPU5/32	5/32	0.35	0.53	1.08	1.7
NPU1/4	1/4	0.49	0.65	1.34	3.6
NPU5/16	5/16	0.59	0.73	1.52	5.0
NPU3/8	3/8	0.71	0.83	1.69	8.1
NPU1/2	1/2	0.83	0.91	1.85	12.0

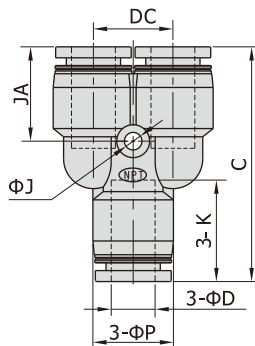
PU Series



[Unit: mm]

Model\Item	ΦD	ΦP	K	A	Weight(g)
PU4	4	9	14	29.5	1.7
PU6	6	12.5	16.5	34	3.6
PU8	8	15	18.5	38.5	5
PU10	10	18	21	43	8.1
PU12	12	21	23	47	12

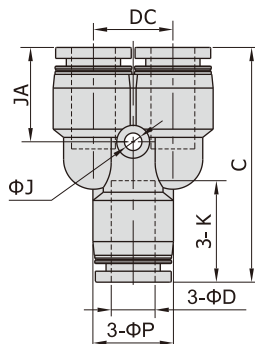
NPY Series



[Unit: inch]

Model\Item	ΦD	ΦP	C	K	ΦJ	JA	DC	Weight(g)
NPY5/32	5/32	0.35	1.16	0.53	0.13	0.47	0.39	3.0
NPY1/4	1/4	0.49	1.46	0.65	0.13	0.61	0.47	6.0
NPY5/16	5/16	0.59	1.67	0.73	0.13	0.67	0.57	8.6
NPY3/8	3/8	0.71	1.91	0.83	0.17	0.77	0.71	14.0
NPY1/2	1/2	0.83	2.15	0.91	0.17	0.83	0.81	21.2

PY Series



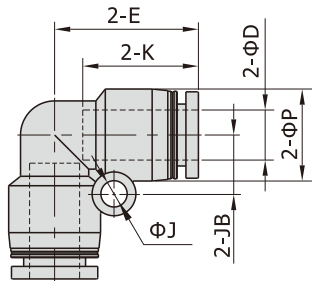
[Unit: mm]

Model\Item	ΦD	ΦP	C	K	ΦJ	JA	DC	Weight(g)
PY4	4	9	31.5	14	3.2	13	10	3
PY6	6	12.5	37	16.5	3.2	15.5	12	6
PY8	8	15	42.5	18.5	3.2	17	14.5	8.6
PY10	10	18	48.5	21	4.3	19.5	18	14
PY12	12	21	54.5	23	4.3	21	20.5	21.2

Accessories—One-Touch Fittings

One-touch fittings—tube-tube type

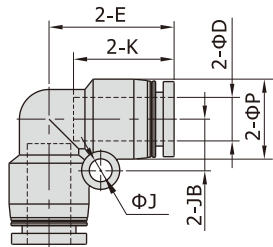
NPV Series



[Unit: inch]

Model\Item	ΦD	ΦP	K	E	ΦJ	JB	Weight(g)
NPV5/32	5/32	0.35	0.52	0.64	0.13	0.26	1.9
NPV1/4	1/4	0.49	0.65	0.79	0.13	0.31	4.2
NPV5/16	5/16	0.59	0.73	0.91	0.17	0.37	6.0
NPV3/8	3/8	0.71	0.83	1.04	0.17	0.43	9.3
NPV1/2	1/2	0.83	0.91	1.18	0.17	0.51	14.6

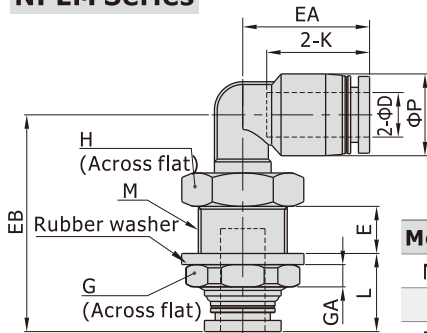
PV Series



[Unit: mm]

Model\Item	ΦD	ΦP	K	E	ΦJ	JB	Weight(g)
PV4	4	9	14	17	3.2	6.5	1.9
PV6	6	12.5	16.5	20	3.2	8	4.2
PV8	8	15	18.5	23	4.3	9.5	6
PV10	10	18	21	26.5	4.3	11	9.3
PV12	12	21	23	30	4.3	13	14.6

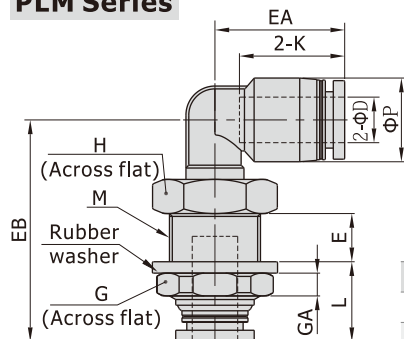
NPLM Series



[Unit: inch]

Model\Item	ΦD	ΦP	M	L	E	K	EA	EB	GA	G	H	Weight(g)
NPLM5/32	5/32	0.35	1/2-20UNF	0.47	0.30	0.52	0.64	1.19	0.16	9/16	9/16	7.6
NPLM1/4	1/4	0.49	9/16-18UNF	0.49	0.33	0.67	0.79	1.40	0.16	11/16	11/16	12.3
NPLM5/16	5/16	0.59	5/8-18UNF	0.53	0.35	0.73	0.91	1.54	0.16	3/4	3/4	16.6
NPLM3/8	3/8	0.71	7/8-14UNF	0.57	0.43	0.83	1.00	1.75	0.20	1	1	29.0
NPLM1/2	1/2	0.83	7/8-14UNF	0.61	0.43	0.91	1.16	1.89	0.24	1	1	35.3

PLM Series



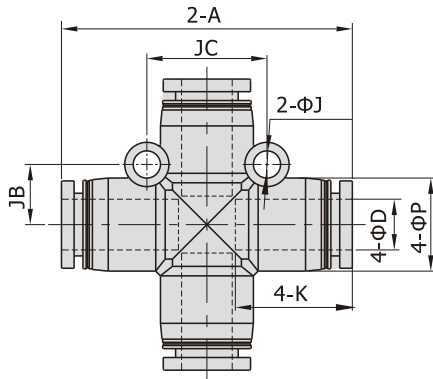
[Unit: mm]

Model\Item	ΦD	ΦP	M	L	E	K	EA	EB	GA	G	H	Weight(g)
PLM4	4	9	M12X1	12	7.5	14	17	31	4	14	14	7.5
PLM6	6	12.5	M14X1	12.5	8.5	17	20	35.5	4	17	17	12.1
PLM8	8	15	M16X1	13.5	9	18.5	23	39	4	19	19	16.6
PLM10	10	18	M20X1	14.5	11	21	25.5	44.5	5	24	22	26.2
PLM12	12	21	M22X1	15.5	11	23	29.5	48	6	27	24	34

Accessories——One-Touch Fittings

One-touch fittings—tube-tube type

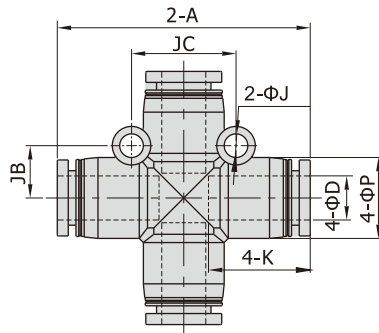
NPZ Series



[Unit: inch]

Model\Item	ΦD	A	ΦP	K	ΦJ	JB	JC	Weight(g)
NPZ5/32	5/32	1.28	0.35	0.52	0.13	0.26	0.51	3.9
NPZ1/4	1/4	1.56	0.49	0.65	0.13	0.31	0.63	7.9
NPZ5/16	5/16	1.81	0.59	0.73	0.17	0.37	0.75	11.1
NPZ3/8	3/8	2.07	0.71	0.83	0.17	0.43	0.87	17.5
NPZ1/2	1/2	2.34	0.83	0.91	0.17	0.51	1.02	26.6

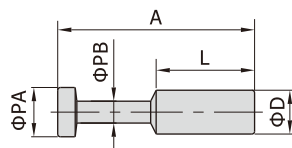
PZ Series



[Unit: mm]

Model\Item	ΦD	A	ΦP	K	ΦJ	JB	JC	Weight(g)
PZ4	4	34	9	14	3.2	6.5	13	3.9
Pz6	6	39.5	12.5	16.5	3.2	8	16	7.9
PZ8	8	46	15	18.5	4.3	9.5	19	11.1
PZ10	10	52.5	18	21	4.3	11	22	17.5
PZ12	12	59.5	21	23	4.3	13	26	26.6

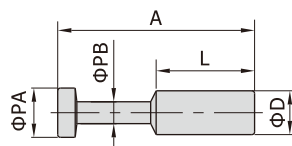
NPP Series



[Unit: inch]

Model\Item	ΦD	ΦPA	ΦPB	L	A	Weight(g)
NPP5/32	5/32	0.20	0.12	0.59	1.08	0.7
NPP1/4	1/4	0.28	0.12	0.67	1.26	0.9
NPP5/16	5/16	0.35	0.16	0.71	1.42	1.6
NPP3/8	3/8	0.35	0.16	0.79	1.50	2.5
NPP1/2	1/2	0.51	0.24	0.91	1.73	4.3

PP Series



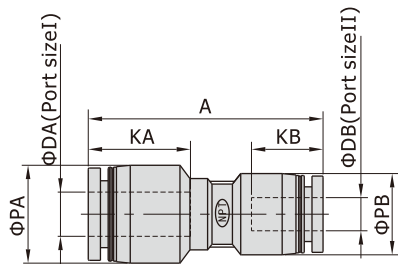
[Unit: mm]

Model\Item	ΦD	ΦPA	ΦPB	L	A	Weight(g)
PP4	4	5	3	15	27.5	0.7
Pp6	6	7	3	17	32	0.9
PP8	8	9	4	18	36	1.6
PP10	10	11	5	20	42	2.5
PP12	12	13	6	23	44	4.3

Accessories——One-Touch Fittings

One-touch fittings—tube-tube type

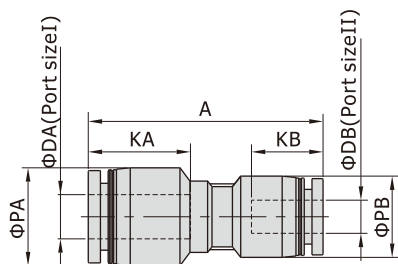
NPG Series



[Unit: inch]

Model\Item	ΦDA	ΦDB	ΦPA	ΦPB	KA	KB	A	Weight(g)
NPG1/4-5/32	1/4	5/32	0.49	0.35	0.65	0.53	1.30	2.7
NPG5/16-1/4	5/16	1/4	0.59	0.49	0.73	0.65	1.50	4.5
NPG3/8-1/4	3/8	1/4	0.71	0.59	0.83	0.65	1.65	6.9
NPG3/8-5/16	3/8	5/16	0.71	0.59	0.83	0.73	1.67	6.7
NPG1/2-5/16	1/2	5/16	0.83	0.71	0.91	0.73	1.83	10.3
NPG1/2-3/8	1/2	3/8	0.83	0.71	0.91	0.83	1.85	10.2

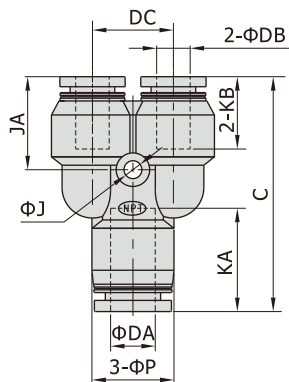
PG Series



[Unit: mm]

Model\Item	ΦDA	ΦDB	ΦPA	ΦPB	KA	KB	A	Weight(g)
PG6-4	6	4	12.5	9	16.5	14	33.5	2.7
PG8-4	8	4	15	12.5	18.5	14	37.5	4.5
PG8-6	8	6	15	12.5	18.5	16.5	38	4.5
PG10-6	10	6	18	15	21	16.5	42	6.9
PG10-8	10	8	18	15	21	18.5	42.5	6.7
PG12-8	12	8	21	18	23	18.5	46.5	10.3
PG12-10	12	10	21	18	23	21	47	10.2

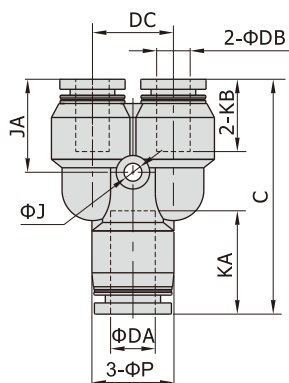
NPYW Series



[Unit: inch]

Model\Item	ΦDA	ΦDB	C	ΦP	KA	KB	ΦJ	JA	DC	Weight(g)
NPYW1/4-5/32	1/4	5/32	1.40	0.49	0.65	0.53	0.13	0.55	0.47	5.8
NPYW5/16-1/4	5/16	1/4	1.65	0.59	0.73	0.65	0.13	0.65	0.57	9.1
NPYW3/8-5/16	3/8	5/16	1.91	0.71	0.83	0.73	0.17	0.75	0.71	14.1
NPYW1/2-5/16	1/2	5/16	2.13	0.83	0.91	0.73	0.17	0.81	0.81	22.3
NPYW1/2-3/8	1/2	3/8	2.15	0.83	0.91	0.83	0.17	0.83	0.81	21.7

PYW Series



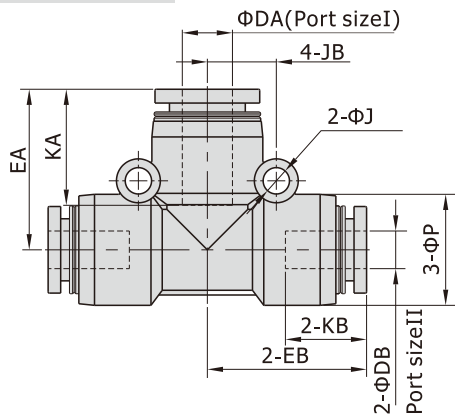
[Unit: mm]

Model\Item	ΦDA	ΦDB	C	ΦP	KA	KB	ΦJ	JA	DC	Weight(g)
PYW6-4	6	4	36.5	12.5	16.5	14	3.2	15	12	5.8
PYW8-6	8	6	42	15	18.5	16.5	3.2	16.5	14.5	9.1
PYW10-8	10	8	48.5	18	21	18.5	4.3	19	18	14.1
PYW12-8	12	8	54	21	23	18.5	4.3	20.5	20.5	22.3
PYW12-10	12	10	54.5	21	23	21	4.3	21	20.5	21.7

Accessories——One-Touch Fittings

One-touch fittings—tube-tube type

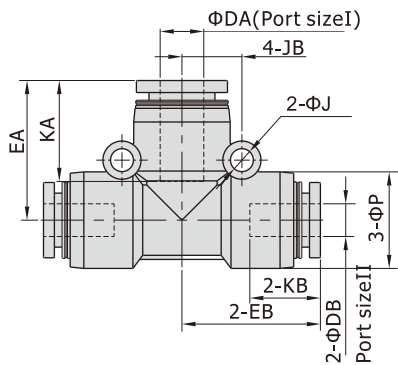
NPEW Series



[Unit: inch]

Model\Item	ΦDA	ΦDB	ΦP	KA	KB	EA	EB	ΦJ	JB	Weight(g)
NPEW1/4-5/32	1/4	5/32	0.49	0.65	0.52	0.79	0.74	0.13	0.31	7.0
NPEW5/16-1/4	5/16	1/4	0.59	0.73	0.65	0.89	0.87	0.17	0.37	22.8
NPEW3/8-5/16	3/8	5/16	0.71	0.83	0.73	1.00	1.00	0.17	0.43	15.1
NPEW1/2-5/16	1/2	5/16	0.83	0.91	0.73	1.14	1.12	0.17	0.51	22.0
NPEW1/2-3/8	1/2	3/8	0.83	0.91	0.83	1.14	1.14	0.17	0.51	21.5

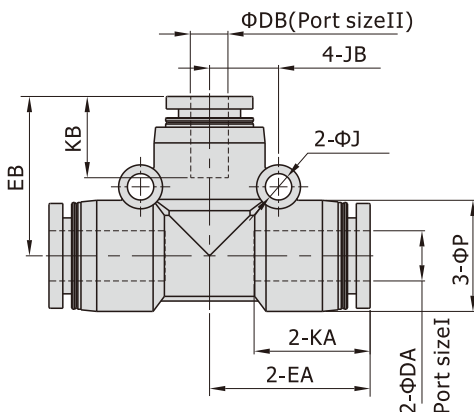
PEW Series



[Unit: mm]

Model\Item	ΦDA	ΦDB	ΦP	KA	KB	EA	EB	ΦJ	JB	Weight(g)
PEW6-4	6	4	12.5	16.5	14	20	19.5	3.2	8	7.0
PEW8-6	8	6	15	18.5	16.5	22.5	22	4.3	9.5	22.8
PEW10-8	10	8	18	21	18.5	25.5	25.5	4.3	11	15.1
PEW12-8	12	8	21	23	18.5	29	28.5	4.3	13	22.0
PEW12-10	12	10	21	23	21	29	29	4.3	13	21.5

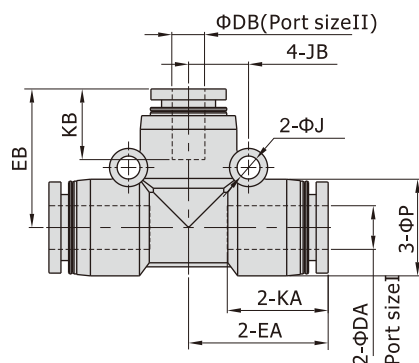
NPEG Series



[Unit: inch]

Model\Item	ΦDA	ΦDB	ΦP	KA	KB	EA	EB	ΦJ	JB	Weight(g)
NPEG1/4-5/32	1/4	5/32	0.49	0.65	0.52	0.79	0.74	0.13	0.31	7.0
NPEG5/16-1/4	5/16	1/4	0.59	0.73	0.65	0.89	0.87	0.17	0.37	22.8
NPEG3/8-5/16	3/8	5/16	0.71	0.83	0.73	1.00	1.00	0.17	0.43	15.1
NPEG1/2-5/16	1/2	5/16	0.83	0.91	0.73	1.14	1.12	0.17	0.51	22.0
NPEG1/2-3/8	1/2	3/8	0.83	0.91	0.83	1.14	1.14	0.17	0.51	21.5

PEG Series



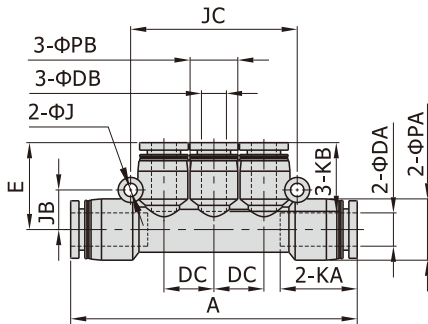
[Unit: mm]

Model\Item	ΦDA	ΦDB	ΦP	KA	KB	EA	EB	ΦJ	JB	Weight(g)
PEG6-4	6	4	12.5	16.5	14	20.0	19.5	3.2	8	7.0
PEG8-6	8	6	15	18.5	16.5	22.5	22	4.3	9.5	22.8
PEG10-8	10	8	18	21	18.5	25.5	25.5	4.3	11	15.1
PEG12-8	12	8	21	23	18.5	29	28.5	4.3	13	22.0
PEG12-10	12	10	21	23	21	29	29	4.3	13	21.5

Accessories——One-Touch Fittings

One-touch fittings—tube-tube type

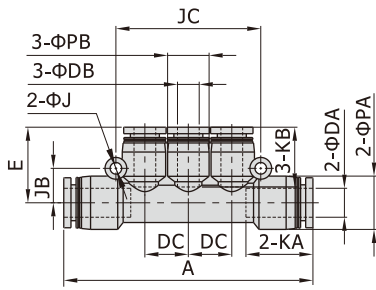
NPKG Series



[Unit: inch]

Model\Item	ΦDA	ΦDB	A	ΦPA	ΦPB	KA	KB	ΦJ	JB	JC	DC	E	Weight(g)
NPKG1/4-5/32	1/4	5/32	2.30	0.49	0.35	0.65	0.52	0.13	0.31	1.34	0.39	0.66	8.6
NPKG5/16-1/4	5/16	1/4	2.72	0.59	0.49	0.73	0.65	0.13	0.37	1.57	0.47	0.83	13.5
NPKG3/8-5/16	3/8	5/16	3.15	0.71	0.59	0.83	0.73	0.17	0.43	1.89	0.57	0.94	20.7

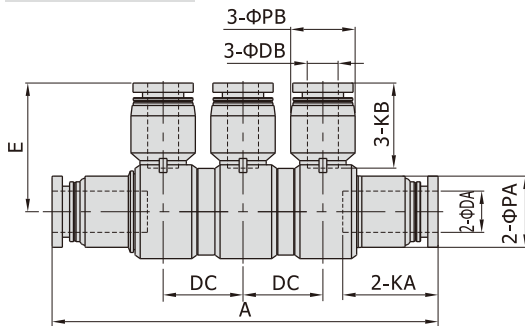
PKG Series



[Unit: mm]

Model\Item	ΦDA	ΦDB	A	ΦPA	ΦPB	KA	KB	ΦJ	JB	JC	DC	E	Weight(g)
PKG6-4	6	4	58.5	12.5	9	16.5	14	3.2	8	34	10	17.5	8.6
PKG8-6	8	6	69	15	12.5	18.5	16.5	3.2	9.5	40	12	21	13.5
PKG10-8	10	8	80	18	15	21	18.5	4.3	11	48	14.5	24	20.7

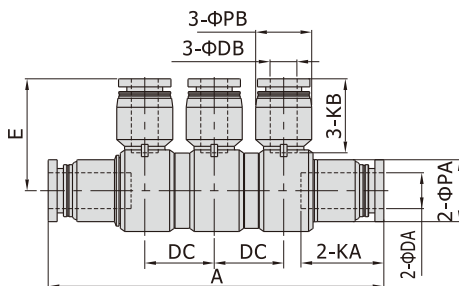
NPHK Series



[Unit: inch]

Model\Item	ΦDA	ΦDB	A	ΦPA	ΦPB	KA	KB	DC	E	Weight(g)
NPHK5/16-1/4	5/16	1/4	2.95	0.55	0.49	0.73	0.65	0.61	0.98	28.4
NPHK3/8-5/16	3/8	5/16	3.37	0.67	0.59	0.83	0.73	0.65	1.16	45.0

PHK Series



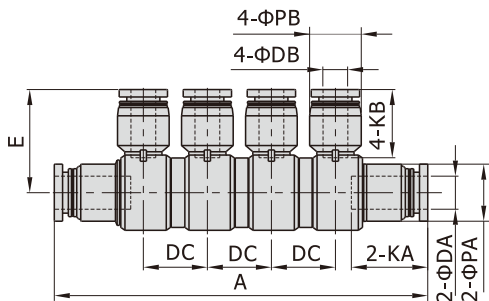
[Unit: mm]

Model\Item	ΦDA	ΦDB	A	ΦPA	ΦPB	KA	KB	DC	E	Weight(g)
PHK8-6	8	6	75	14	12.5	18.5	16.5	15.5	25	28.4
PHK10-8	10	8	85.5	17	15	21	18.5	16.5	29.5	45.0

Accessories——One-Touch Fittings

One-touch fittings—tube-tube type

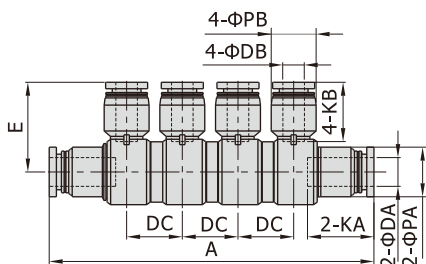
NPHD Series



[Unit: inch]

Model\Item	ΦDA	ΦDB	A	ΦPA	ΦPB	KA	KB	DC	E	Weight(g)
NPHD5/16-1/4	5/16	1/4	3.56	0.55	0.49	0.73	0.65	0.61	0.98	18.7
NPHD3/8-5/16	3/8	5/16	4.04	0.67	0.59	0.83	0.73	0.65	1.16	52.7

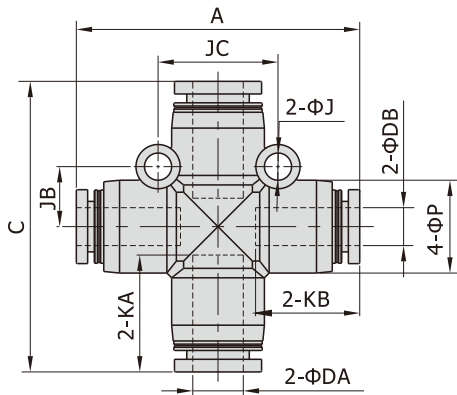
PHD Series



[Unit: mm]

Model\Item	ΦDA	ΦDB	A	ΦPA	ΦPB	KA	KB	DC	E	Weight(g)
PHD8-6	8	6	90.5	14	12.5	18.5	16.5	15.5	25	18.7
PHD10-8	10	8	102.5	17	15	21	18.5	16.5	29.5	52.7

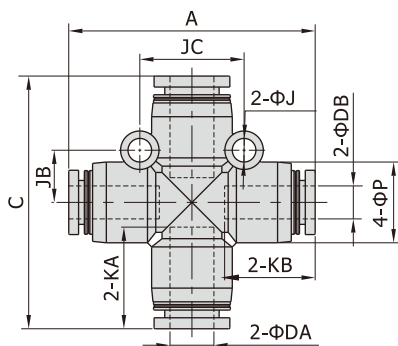
NPZG Series



[Unit: inch]

Model\Item	ΦDA	ΦDB	A	C	ΦP	KA	KB	ΦJ	JB	JC	Weight(g)
NPZG1/4-5/32	1/4	5/32	1.47	1.56	0.49	0.65	0.52	0.13	0.31	0.63	8.2
NPZG5/16-1/4	5/16	1/4	1.77	1.81	0.59	0.73	0.65	0.17	0.37	0.75	12.0
NPZG3/8-5/16	3/8	5/16	2.05	2.07	0.71	0.83	0.73	0.17	0.43	0.87	18.1
NPZG1/2-3/8	1/2	3/8	2.32	2.34	0.83	0.91	0.83	0.17	0.51	1.02	29.0

PZG Series



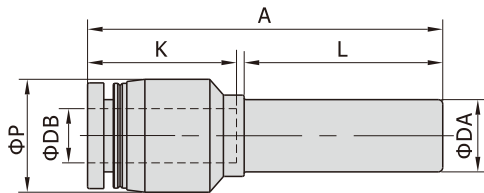
[Unit: mm]

Model\Item	ΦDA	ΦDB	A	C	ΦP	KA	KB	ΦJ	JB	JC	Weight(g)
PZG6-4	6	4	39	39.5	12.5	16.5	14	3.2	8	16	8.2
PZG8-6	8	6	45	46	15	18.5	16.5	4.3	9.5	19	12.0
PZG10-8	10	8	52	52.5	18	21	18.5	4.3	11	22	18.1
PZG12-10	12	10	59	59.5	21	23	21	4.3	13	26	29.0

Accessories——One-Touch Fittings

One-touch fittings—tube-tube type

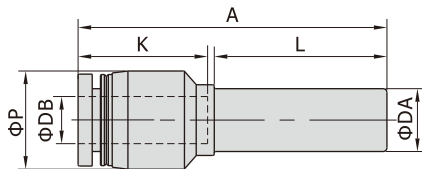
NPGJ Series



[Unit: inch]

Model\Item	Φ DA	Φ DB	Φ P	K	L	A	Weight(g)
NPGJ1/4-5/32	1/4	5/32	0.35	0.55	0.83	1.42	1.5
NPGJ5/16-1/4	5/16	1/4	0.49	0.65	0.87	1.56	3.2
NPGJ3/8-1/4	3/8	1/4	0.59	0.65	0.98	1.73	4.1
NPGJ3/8-5/16	3/8	5/16	0.59	0.73	0.98	1.75	3.9
NPGJ1/2-5/16	1/2	5/16	0.71	0.73	1.02	1.91	6.2
NPGJ1/2-3/8	1/2	3/8	0.71	0.83	1.02	1.93	6.0

PGJ Series



[Unit: mm]

Model\Item	Φ DA	Φ DB	Φ P	K	L	A	Weight(g)
PGJ6-4	6	4	9	14	21	35	1.5
PGJ8-4	8	4	12.5	14	22	39	2.6
PGJ8-6	8	6	12.5	16.5	22	39.5	3.2
PGJ10-6	10	6	15	16.5	25	44	4.1
PGJ10-8	10	8	15	18.5	25	44.5	3.9
PGJ12-8	12	8	18	18.5	26	48.5	6.2
PGJ12-10	12	10	18	21	26	49	6.0