

## Metal one-touch fittings



### Ordering code

NPT Thread

**NBPC 1/4 - 1/8**

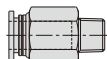
1

2

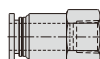
3

#### ① Model

NBPC: Metal male connector



NBPCF: Metal female connector



NBPMF: Metal bulkhead female connector



NBPCF: Metal female connector

#### ② Port size

5/32:  $\Phi 5/32$ "  
1/4:  $\Phi 1/4$ "  
5/16:  $\Phi 5/16$ "  
3/8:  $\Phi 3/8$ "  
1/2:  $\Phi 1/2$ "

#### ③ Thread connection

U10: #10-32UNF  
1/8: NPT1/8  
1/4: NPT1/4  
3/8: NPT3/8  
1/2: NPT1/2

PT Thread

**BPC 6 01**

1

2

3

#### ① Model

BPC: Metal male connector



BPCF: Metal female connector



BPOC: Hexagon socket head metal male connector



BPMF: Metal bulkhead female connector



#### ② Port size

4:  $\Phi 4$ mm  
6:  $\Phi 6$ mm  
8:  $\Phi 8$ mm  
10:  $\Phi 10$ mm  
12:  $\Phi 12$ mm

#### ③ Thread connection

M5: M5X0.8  
01: PT1/8  
02: PT1/4  
03: PT3/8  
04: PT1/2

NPT Thread

**NBPM 1/4**

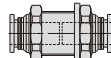
1

2



#### ① Model

NBPM: Metal bulkhead connector



#### ② Port size

5/32:  $\Phi 5/32$ "  
1/4:  $\Phi 1/4$ "  
5/16:  $\Phi 5/16$ "  
3/8:  $\Phi 3/8$ "  
1/2:  $\Phi 1/2$ "

PT Thread

**BPM 6**

1

2



#### ① Model

BPM: Metal bulkhead connector



#### ② Port size

4 :  $\Phi 4$ mm  
6 :  $\Phi 6$ mm  
8 :  $\Phi 8$ mm  
10 :  $\Phi 10$ mm  
12 :  $\Phi 12$ mm

## Metal one-touch fittings

### Specification

Operating pressure range	0~145psi(0~1.0MPa)
Negative pressure	10Torr(-750mmHg)
Proof pressure	215psi(1.5MPa)
Ambient and fluid temperature	32~302°F(0~150°C)
Applicable tubing	Soft nylon or polyurethane

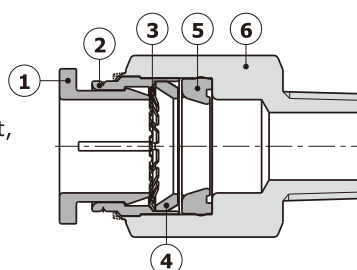
Note: The temperature resistance level of the tubing should be confirmed first when used in high temperature environments.

### Product feature

1. High flow capacity; The flow rate of these fittings is equivalent to that of the adaptable tubings.
2. Inserting or removal tubing is simple and convenient, and the connecting portion is reliable and durable.
3. Sealant is coated on threaded portion.  
The M5, #10-32UNF metric thread are attached with a sealing gasket, to ensure no leakage of the threaded connection part.
4. The fitting metal body adopts a special nickel-plating process, which has good corrosion resistance.
5. Metal fittings can be used in high temperature environment.

### Inner structure

#### NBPC,BPC Series



NO.	Name
1	Metal connector
2	Locating ring
3	Spring gasket
4	Locating seat
5	Special shape O-ring
6	Straight connector body

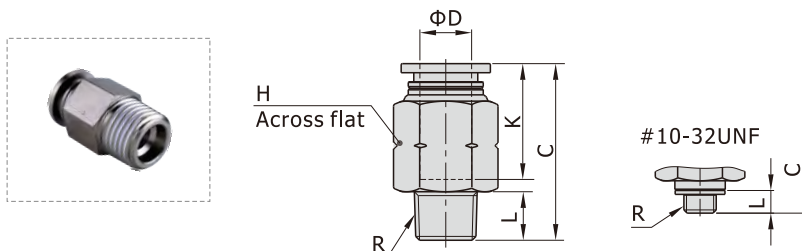
### Table for interface port and tube O.D.

Product series	Thread type	Port size					Product series	Thread type	Port size				
		Φ5/32"	Φ1/4"	Φ5/16"	Φ3/8"	Φ1/2"			Φ4	Φ6	Φ8	Φ10	Φ12
NBPC	#10-32UNF	●	●				BPC	M5	●	●			
	NPT1/8	●	●	●	●			PT1/8	●	●	●	●	
	NPT1/4		●	●	●	●		PT1/4	●	●	●	●	●
	NPT3/8		●	●	●	●		PT3/8		●	●	●	●
	NPT1/2				●	●		PT1/2				●	●
NBPCF	#10-32UNF	●	●				BPOC BPCF	M5	●	●			
	NPT1/8	●	●	●				PT1/8	●	●	●		
	NPT1/4		●	●	●			PT1/4		●	●	●	
	NPT3/8				●	●		PT3/8				●	●
	NPT1/2					●		PT1/2					●
NBPMF	NPT1/8	●	●	●			BPMF	M5					
	NPT1/4		●	●	●			PT1/8	●	●	●		
	NPT3/8				●	●		PT1/4		●	●	●	
	NPT1/2					●		PT3/8				●	●
								PT1/2					●
Product series	Port size					Product series	Port size						
	Φ5/32"	Φ1/4"	Φ5/16"	Φ3/8"	Φ1/2"		Φ4	Φ6	Φ8	Φ10	Φ12		
NBPM	●	●	●	●	●	BPM	●	●	●	●	●		

## Metal one-touch fittings

### Dimensions

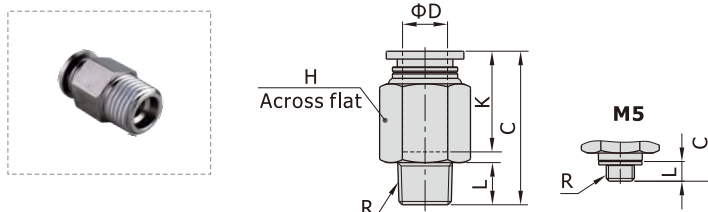
#### NBPC Series



[Unit: inch]

Model\Item	ΦD	R	L	C	K	H	Weight(g)
NBPC5/32-U10	5/32	#10-32UNF	0.14	0.74	0.52	5/16	5.5
NBPC5/32-1/8		NPT1/8	0.30	0.74	0.52	7/16	9.0
NBPC1/4-U10	1/4	#10-32UNF	0.14	0.87	0.63	1/2	11.6
NBPC1/4-1/8		NPT1/8	0.30	0.85	0.71	1/2	15.3
NBPC1/4-1/4		NPT1/4	0.39	0.95	0.71	9/16	19.6
NBPC1/4-3/8		NPT3/8	0.43	0.87	0.71	11/16	27.5
NBPC5/16-1/8	5/16	NPT1/8	0.30	1.08	0.70	9/16	16.9
NBPC5/16-1/4		NPT1/4	0.39	1.04	0.70	9/16	16.6
NBPC5/16-3/8		NPT3/8	0.43	0.90	0.70	11/16	26.1
NBPC3/8-1/8	3/8	NPT1/8	0.30	1.15	0.80	11/16	26.4
NBPC3/8-1/4		NPT1/4	0.39	1.25	0.80	11/16	29.9
NBPC3/8-3/8		NPT3/8	0.43	1.07	0.80	11/16	35.5
NBPC3/8-1/2		NPT1/2	0.55	1.02	0.80	7/8	41.8
NBPC1/2-1/4	1/2	NPT1/4	0.39	1.35	0.88	7/8	51.9
NBPC1/2-3/8		NPT3/8	0.43	1.17	0.88	7/8	39.5
NBPC1/2-1/2		NPT1/2	0.55	1.25	0.88	7/8	51.9

#### BPC Series



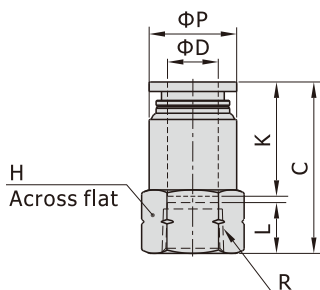
[Unit: mm]

Model\Item	ΦD	R	L	C	K	H	Weight(g)
BPC4M5	4	M5X0.8	3.5	19.5	14	9	5.5
BPC401		PT1/8	7.5	19.5	14	10	7.9
BPC402		PT1/4	10	19	14	14	8.7
BPC6M5	6	M5X0.8	3.5	22	16	12	10.1
BPC601		PT1/8	7.5	21.5	18	12	14.2
BPC602		PT1/4	10	24	18	14	19.1
BPC603		PT3/8	11	22.5	18	17	26.8
BPC801	8	PT1/8	7.5	27.5	18	14	16.1
BPC802		PT1/4	10	26.5	18	14	16
BPC803		PT3/8	11	23	18	17	25.4
BPC1001	10	PT1/8	7.5	29.5	20.5	17	24.5
BPC1002		PT1/4	10	32	20.5	17	28
BPC1003		PT3/8	11	27.5	20.5	17	34.6
BPC1004		PT1/2	14	25.5	20.5	21	39.3
BPC1202	12	PT1/4	10	34.5	22	21	44.5
BPC1203		PT3/8	11	30	22	21	34.2
BPC1204		PT1/2	14	32	22	21	47

# Accessories—One-Touch Fittings

## Metal one-touch fittings

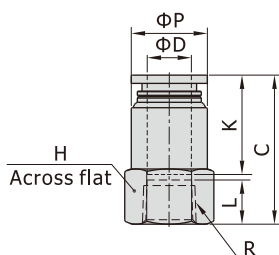
### NBPCF Series



[Unit: inch]

Model\Item	ΦD	R	ΦP	L	C	K	H	Weight(g)
NBPCF5/32-U10	5/32	#10-32UNF	0.35	0.20	0.80	0.52	3/8	3.3
NBPCF5/32-1/8		NPT1/8	0.37	0.31	0.87	0.52	9/16	5.5
NBPCF1/4-U10	1/4	#10-32UNF	0.47	0.20	0.83	0.63	1/2	5.9
NBPCF1/4-1/8		NPT1/8	0.49	0.31	0.99	0.63	9/16	7.4
NBPCF1/4-1/4		NPT1/4	0.49	0.43	1.11	0.63	11/16	9.7
NBPCF5/16-1/8	5/16	NPT1/8	0.55	0.31	1.06	0.70	9/16	7.3
NBPCF5/16-1/4		NPT1/4	0.57	0.43	1.18	0.70	11/16	11.1
NBPCF3/8-1/4	3/8	NPT1/4	0.67	0.43	1.27	0.80	11/16	14.0
NBPCF3/8-3/8		NPT3/8	0.71	0.47	1.31	0.80	7/8	19.2
NBPCF1/2-3/8	1/2	NPT3/8	0.83	0.47	1.29	0.88	7/8	23.7
NBPCF1/2-1/2		NPT1/2	0.83	0.53	1.43	0.88	1	25.6

### BPCF Series



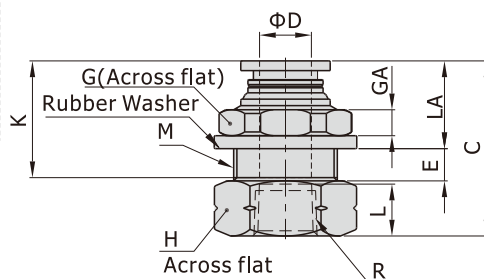
[Unit: mm]

Model\Item	ΦD	R	ΦP	L	C	K	H	Weight(g)
BPCF4M5	4	M5X0.8	9	5	21	14	10	3.5
BPCF401		PT1/8	9.5	8	23	14	14	5.3
BPCF6M5	6	M5X0.8	12	5	21	16	12	5.6
BPCF601		PT1/8	12.5	8	25	16	14	7.2
BPCF602		PT1/4	12.5	11	28	16	17	9.2
BPCF801	8	PT1/8	14	8	27	18	14	7.1
BPCF802		PT1/4	14.5	11	30	18	17	10.6
BPCF1002	10	PT1/4	17	11	32.5	20.5	17	13.5
BPCF1003		PT3/8	18	12	33.5	20.5	21	17.5
BPCF1203	12	PT3/8	21	12	35	22	21	22
BPCF1204		PT1/2	21	13.5	36.5	22	25	24.9

# Accessories—One-Touch Fittings

## Metal one-touch fittings

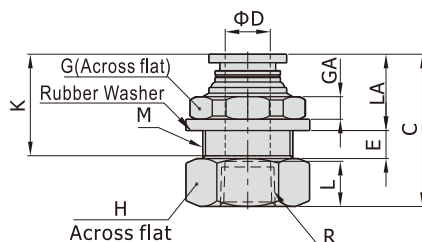
### NBPMF Series



[Unit: inch]

Model\Item	ΦD	R	M	L	C	K	LA	E	GA	G	H	Weight(g)
NBPMF5/32-1/8	5/32	NPT1/8	1/2-20UNF	0.31	0.95	0.52	0.47	0.16	0.16	9/16	9/16	7.8
NBPMF1/4-1/8	1/4	NPT1/8	9/16-18UNF	0.31	0.95	0.63	0.47	0.20	0.16	11/16	11/16	10.7
NBPMF1/4-1/4		NPT1/4	9/16-18UNF	0.43	1.19	0.63	0.47	0.20	0.16	11/16	11/16	12.7
NBPMF5/16-1/8	5/16	NPT1/8	5/8-18UNF	0.31	1.06	0.70	0.51	0.22	0.16	3/4	3/4	13.9
NBPMF5/16-1/4		NPT1/4	5/8-18UNF	0.43	1.24	0.70	0.51	0.22	0.16	3/4	3/4	15.3
NBPMF3/8-1/4	3/8	NPT1/4	7/8-14UNF	0.43	1.35	0.80	0.55	0.30	0.20	1	1	31.1
NBPMF3/8-3/8		NPT3/8	7/8-14UNF	0.47	1.39	0.80	0.55	0.30	0.20	1	1	29.7
NBPMF1/2-3/8	1/2	NPT3/8	7/8-14UNF	0.47	1.45	0.88	0.59	0.31	0.24	1	1	34.9
NBPMF1/2-1/2		NPT1/2	7/8-14UNF	0.53	1.51	0.88	0.59	0.31	0.24	1	1	32.5

### BPMF Series



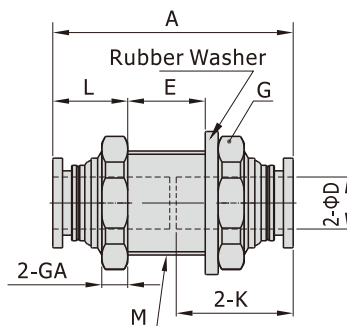
[Unit: mm]

Model\Item	ΦD	R	M	L	C	K	LA	E	GA	G	H	Weight(g)
BPMF401	4	PT1/8	M12X1	8	25	14	12	4	4	14	14	7.6
BPMF601	6	PT1/8	M14X1	8	25	16	12	5	4	17	17	10.4
BPMF602		PT1/4	M14X1	11	30	16	12	5	4	17	17	12.2
BPMF801	8	PT1/8	M16X1	8	27	18	13	5.5	4	19	19	13.9
BPMF802		PT1/4	M16X1	11	31.5	18	13	5.5	4	19	19	15.3
BPMF1002	10	PT1/4	M20X1	11	34.5	20.5	14	7.5	5	24	22	26.2
BPMF1003		PT3/8	M20X1	12	35.5	20.5	14	7.5	5	24	22	24.4
BPMF1203	12	PT3/8	M22X1	12	37	22	15	8	6	27	24	32.6
BPMF1204		PT1/2	M22X1	13.5	38.5	22	15	8	6	27	25	31.8

# Accessories—One-Touch Fittings

## Metal one-touch fittings

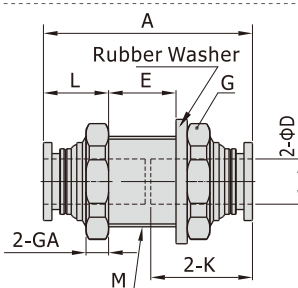
### NBPM Series



[Unit: inch]

Model\Item	ΦD	M	A	K	L	E	GA	G	Weight(g)
NBPM5/32	5/32	1/2-20UNF	1.12	0.55	0.39	0.28	0.16	9/16	6.4
NBPM1/4	1/4	9/16-18UNF	1.28	0.61	0.39	0.43	0.16	11/16	16.4
NBPM5/16	5/16	5/8-18UNF	1.43	0.69	0.43	0.51	0.16	3/4	15.8
NBPM3/8	3/8	7/8-14UNF	1.61	0.78	0.47	0.63	0.20	1	28.9
NBPM1/2	1/2	7/8-14UNF	1.74	0.84	0.51	0.69	0.24	1	40.3

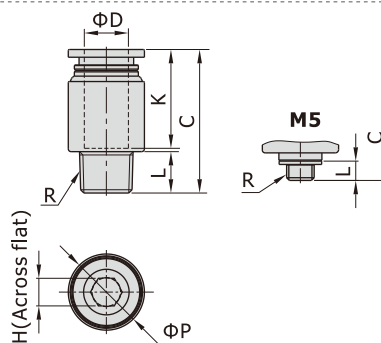
### BPM Series



[Unit: mm]

Model\Item	ΦD	M	A	K	L	E	G(Across flat)	GA	Weight(g)
BPM4	4	M12X1	28.5	14	10	7	14	4	6.4
BPM6	6	M14X1	33	16	10	11	17	4	16.4
BPM8	8	M16X1	37	18	11	13	19	4	15.8
BPM10	10	M20X1	41.5	20.5	12	16	24	5	28.9
BPM12	12	M22X1	45	22	13	17.5	27	6	40.3

### BPOC Series



[Unit: mm]

Model\Item	ΦD	R	ΦP	L	C	K	H	Weight(g)
BPOC4M5	4	M5X0.8	9	3.5	18.5	14	2	4.4
BPOC401		PT1/8	10	7.5	17.5	14	2.5	6.6
BPOC6M5	6	M5X0.8	12	3.5	21	16	2	7.1
BPOC601		PT1/8	12	7.5	21.5	18	4	8.4
BPOC602	8	PT1/4	14	10	21.5	18	4	13.6
BPOC801		PT1/8	14	7.5	26	17.5	5	12.3
BPOC802	10	PT1/4	14	10	24.5	17.5	6	12.7
BPOC1002		PT1/4	17	10	28.5	20.5	6	18.5
BPOC1003	12	PT3/8	17	11	27.5	20.5	8	24.9
BPOC1203		PT3/8	21	11	29.5	22	8	30.4
BPOC1204		PT1/2	21	14	31.5	22	8	42.4