



Product designation				Switch disconnecter with fuse
Product type designation				GM
Type of fuse				J
Number of poles	Nr.			3
Operating voltage type				AC
Contact characteristics				
IEC Conventional free air thermal current I _{th}	A			63
Rated insulation voltage U _i IEC/EN	V			1000
Rated impulse withstand voltage U _{imp}	kV			12
Operating current I _e				
AC21A	400V	A	63	
	500V	A	63	
	690V	A	63	
AC22A	400V	A	63	
	500V	A	63	
	690V	A	63	
AC23A	400V	A	63	
	500V	A	63	
	690V	A	63	
Power dissipation per pole max	W			4
Power dissipation per pole without fuse	W			4
Max fuse power dissipation				
	in open air	W	7.5	
	in enclosure	W	7.5	
Rated operational power AC23A	400V	kW	30	
	690V	kW	55	
Rated short time current (1s) I _{cs} (rms)	kA			2.5
Short-circuit protection with fuse	Class/A			J/60
Making capacity AC23A 400V	A			630
Breaking capacity AC23A 400V	A			504
Mechanical life	cycles			10000
Electrical life AC21A	cycles			6000
Mechanical features				
Operating position				
	normal	Vertical plan		
	allowable	Any		
Fixing				Screw
Terminals				

	type	Built-in terminal lug	
Tightening torque for terminals	max	Nm	3.5
	max	lbin	30

Conductor section	IEC min	mm ²	2.5
	IEC max	mm ²	25
	AWG/kcmil min		14
	AWG/kcmil max		4

UL technical data

UL Standard			UL98
General purpose current rating	A	60	
Operating voltage max	V	600	
Horsepower/FLA current three phase motor			
	240V	HP	15/42
	480V	HP	30/40
	600V	HP	52/52
Short circuit rating	kA rms	200	
Short circuit rating with fuse	Class/A	J/60	

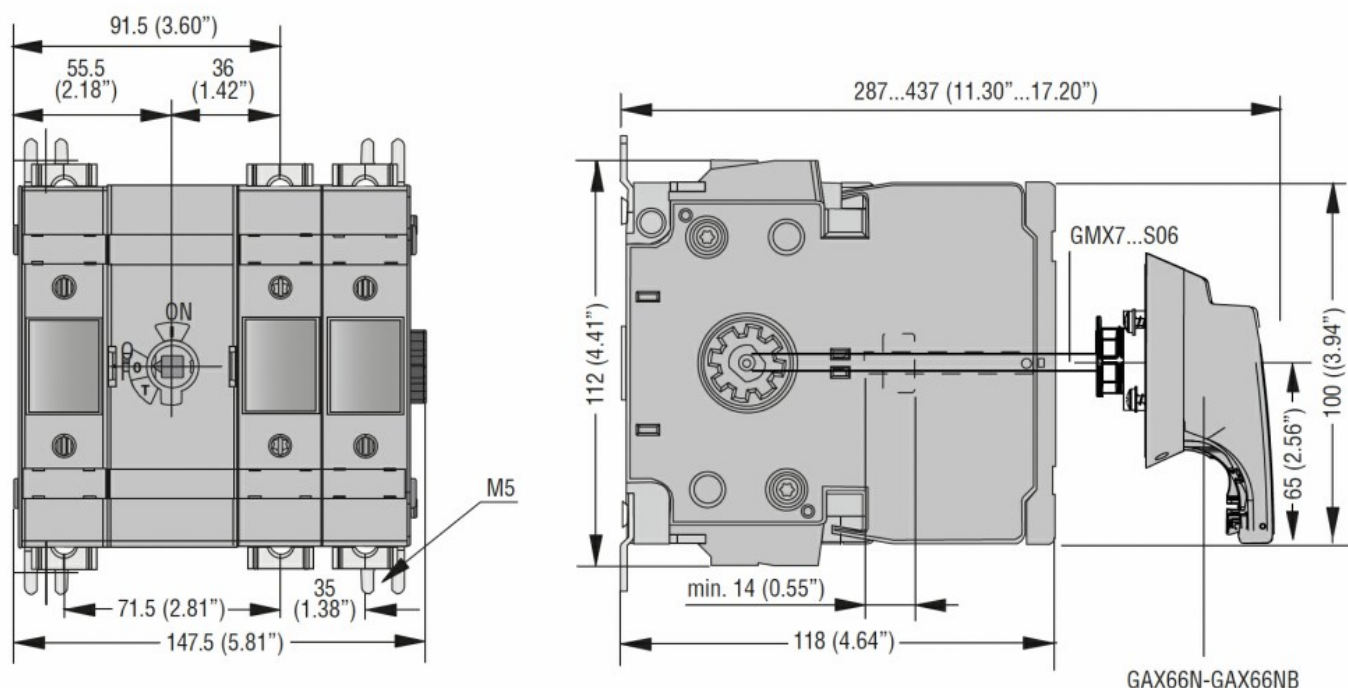
Ambient conditions

Operating temperature	min	°C	-25
	max	°C	55
Storage temperature	min	°C	-40
	max	°C	70
Max altitude	m		3000

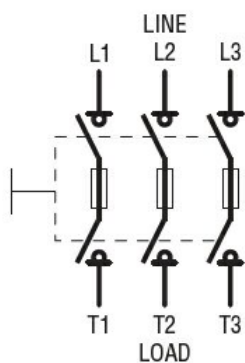
Resistance & Protection

Frontal IP degree	IP20
Pollution degree	3

Dimensions



Wiring diagrams



Certifications and compliance

Compliance

IEC/EN 60947-1

IEC/EN 60947-3

Certifications

cULus according to UL98/CSA C22.2 n°4

ETIM classification

ETIM 8.0

EC000216 -
Switch
disconnecter