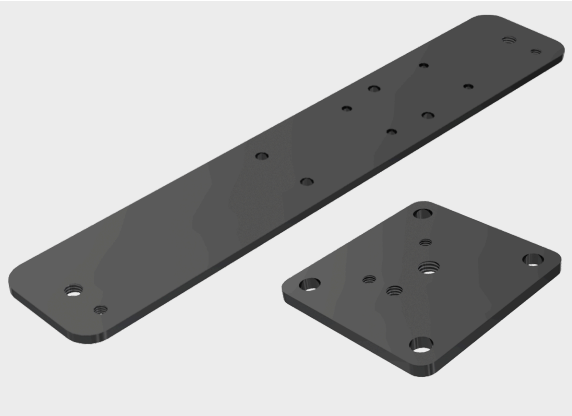




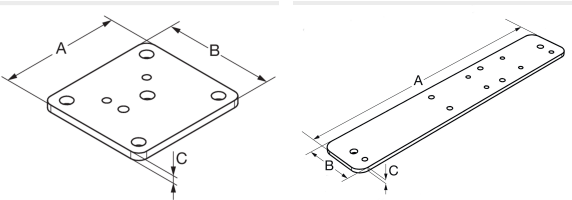
# Retraction system, system plate 21/29



## Product information

System plate for holding the retraction system. Adapted to production series of various manufacturers.  
Contact us for the correct system plate for you!

## Information, conformities and approvals



Article	Order No.	Color	A mm	B mm	C mm	PU pcs.
A3 Fanuc M20iA adapter plate	83692759	Black anodized	65	60	4	1
Kuka KR10 R 1100 base plate	83692760	Black anodized	280	50	4	1

1) serves as mounting base plate for retraction systems 21/29 (pre-assembled)

## Material properties

Aluminium II

## Conformity

RoHS

RoHS (EC Directive 2011/65/EU)

## Approvals and operating permits

ROBI approval



## Retraction system, system plate 21/29

### Classification



ETIM 9: EC010926 || eClass 14: 27430206 || UNSPSC: 31162307 ||