



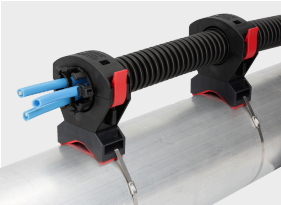
Metal cable tie



Product information

Metal cable ties made of durable stainless steel. Suitable for fixing the FHS base bodies as an alternative to hook-and-loop tape. The KBW/M cable tie tool is required for correct installation. This tensions the cable ties and automatically cuts off the protruding end. The preload is infinitely adjustable.

Information, conformities and approvals



Article	Order No.	Color	Length mm	Width mm	Tensile strength N max.	PU pcs.
Metal cable tie						
KBM 200	87661014	Material color	200	4.6	900	100
KBM 520	87661015	Material color	520	4.6	900	100
KBM 840	87661017	Material color	840	4.6	900	100
KBM 840, VE 5	87661019	Material color	840	4.6	900	5

All details given in our sales brochures and catalogues, as well as the information available online, are based on our current knowledge of the products described. The electronic data and files made available by Murrplastik, particularly CAD files are based on our current knowledge of the product described. A legally binding assurance of certain properties or the suitability for a certain purpose can not be determined from this information. All information with respect to the chemical and physical properties of Murrplastik products, as well as application advice given verbally, in writing or by tests, is given to the best of our knowledge. They do not release the buyer from the obligation to carry out his own tests and trials in order to determine the concrete suitability of the products for the intended purpose. Murrplastik accepts no responsibility for the available information being up-to-date, correct or complete. Neither do we accept responsibility for the quality of this information. Murrplastik accepts no liability for damage caused as a result of using our products. Murrplastik reserves the right to make technical changes and improvements through constant further development of products and services. Our General Terms and Conditions apply.