



Product designation	Power contactor
Product type designation	DPBG12

Contact characteristics

Number of poles	Nr.	3
Operational frequency		
	min	Hz 25
	max	Hz 400

Mechanical features

Operating position	normal allowable	Vertical plan ±30°
Fixing		Screw / DIN rail 35mm
Weight	g	177

Operations

Mechanical life	cycles	20000000
Electrical life	cycles	500000

Safety related data

Performance level B10d according to EN/ISO 13489-1	rated load mechanical load	cycles cycles	500000 20000000
Mirror contacts according to IEC/EN 60947-4-1			Yes
EMC compatibility			yes

AC coil operating

Rated AC voltage at 50/60Hz	V	24
AC operating voltage		
of 50/60Hz coil powered at 50Hz		
pick-up	min	%Us 75
	max	%Us 115
drop-out	min	%Us 20
	max	%Us 55
of 50/60Hz coil powered at 60Hz		
pick-up	min	%Us 80
	max	%Us 115
drop-out	min	%Us 20
	max	%Us 55
AC average coil consumption at 20°C		
of 50/60Hz coil powered at 50Hz	in-rush	VA 30
	holding	VA 4
of 50/60Hz coil powered at 60Hz		

		in-rush	VA	25
		holding	VA	3
of 60Hz coil powered at 60Hz				
		in-rush	VA	30
		holding	VA	4
Dissipation at holding ≤20°C 50Hz		W		0.95
Max cycles frequency				
Mechanical operation			cycles/h	3600
Operating times				
Average time for Us control				
in AC				
		Closing NO		
		min	ms	12
		max	ms	21
		Opening NO		
		min	ms	9
		max	ms	18
		Closing NC		
		min	ms	17
		max	ms	26
		Opening NC		
		min	ms	7
		max	ms	17
in DC				
		Closing NO		
		min	ms	18
		max	ms	25
		Opening NO		
		min	ms	2
		max	ms	3
		Closing NC		
		min	ms	3
		max	ms	5
		Opening NC		
		min	ms	11
		max	ms	17
UL technical data				
Rated operational voltage AC (UL)		V		600
Full-load current (FLA) for three-phase AC motor				
		at 480V	A	11
		at 600V	A	11
Locked rotor current (LRA)		A		84
Yielded mechanical performance				
for single-phase AC motor				
		110/120V	HP	0.5
		230V	HP	1.5
for three-phase AC motor				
		200/208V	HP	3
		220/230V	HP	3
		460/480V	HP	7.5
		575/600V	HP	10
General USE				
Contactor				
		AC current	A	20

Short-circuit protection fuse, 600V

High fault

Short circuit current	kA	100
Fuse rating	A	30
Fuse class		J

Standard fault

Short circuit current	kA	5
Fuse rating	A	30

Contact rating of auxiliary contacts according to UL

A600 - Q600

Ambient conditions

Temperature

Operating temperature

min	°C	-50
max	°C	+70

Storage temperature

min	°C	-60
max	°C	+80

Max altitude

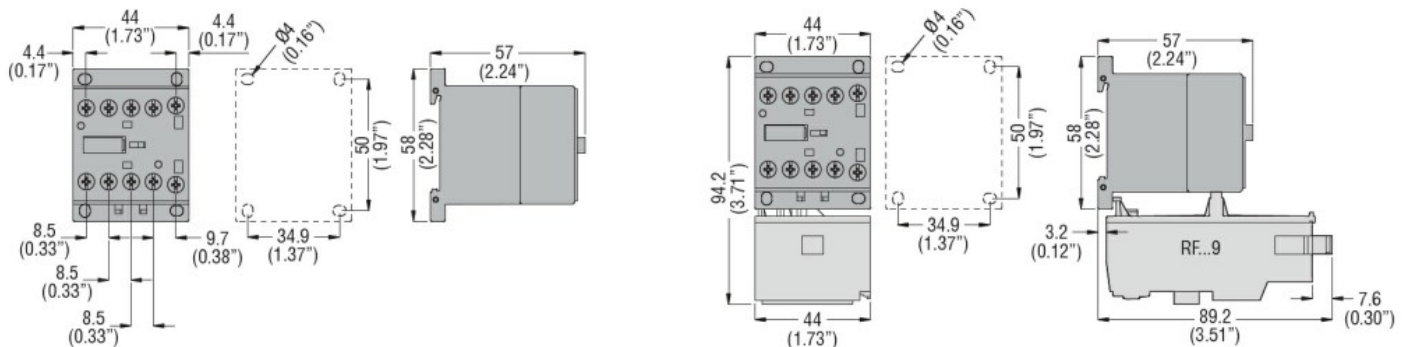
m 3000

Resistance & Protection

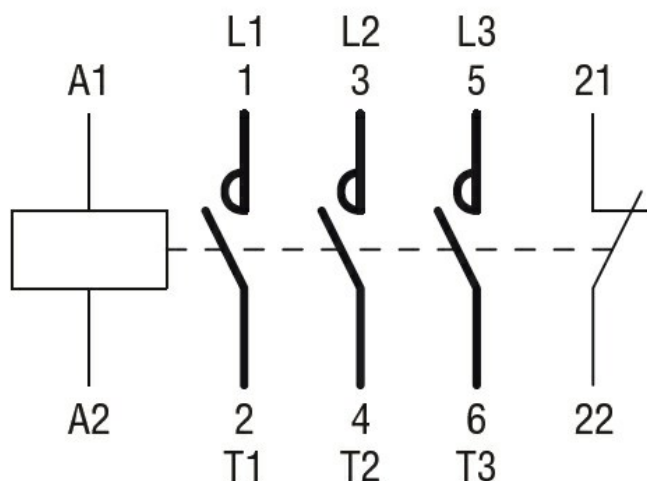
Pollution degree

3

Dimensions



Wiring diagrams



Certifications and compliance

Compliance

CSA C22.2 n° 60947-1

CSA C22.2 n° 60947-4-70

UL 60947-1

UL 60947-4-1

Certificates

cULus

ETIM classification

ETIM 8.0

EC000066 -
Power contactor,
AC switching