

Product designation	Enclosed rotary cam switch		
Product type designation	7GN63		
General characteristics			
Switching diagram	12 - Star-delta motor starter switch		
N° of elements	4		
Mounting form	P - Plastic enclosure with black handle		
Contact characteristics			
Rated insulation voltage Ui	IEC/EN	V	690
	UL/CSA	V	600
Rated impulse withstand voltage Uimp		kV	6
Conventional free air thermal current Ith	IEC/EN	A	63
	UL/CSA	A	60
Rated operational voltage		V	480
Rated operational impulse voltage		kV	4
Maximum fuse size for short-circuit protection In (gG)	10kA	A	63
	15kA	A	63
	25kA	A	63
	50kA	A	63
	63kA	A	63
Rated short time current Icw	1s	kA	1600
Conductivity	10/5 mA/V		
Operational current Ie IEC/EN			
AC1/AC21A		A	63
AC15	110V	A	32
	220/230V	A	25
	380/400V	A	15
	660/690V	A	4
Rated operational power in AC			
Three-phase AC-3	220/230V	kW	11
	380/440V	kW	18.5
	500/690V	kW	18.5
Single-phase AC-3	110V	kW	3.7
	220/230V	kW	6.5
	380/440V	kW	11.5
Three-phase AC23A	220/230V	kW	12.5
	380/440V	kW	30
	500/690V	kW	30
Single-phase AC23A	110V	kW	3.7

		220/230V	kW	7.5
		380/440V	kW	12.5
Rated operational current in DC				
DC21A				
		48V	A	63
		60V	A	50
		110V	A	8
		220V	A	1
DC23A (poles in series)				
		24V	A	50 (1)
		48V	A	50 (2)
		60V	A	50 (3)
		110V	A	25 (3)
		220V	A	15 (4)
DC13				
		24V	A	63
		48V	A	40
		60V	A	28
		110V	A	3.3
Power dissipation			W	3.4
Mechanical features				
Terminals screw				M5
Tightening torque for terminals max			Nm	2
Conductor size				
AWG - Rigid cable				
		min	AWG	14
		Max	AWG	6
AWG - Flexible cable				
		min	AWG	14
		Max	AWG	8
Conductor size (IEC) - Flexible cable				
		min	mm ²	2.5
		Max	mm ²	10
Conductor size (IEC) - Rigid cable				
		min	mm ²	2.5
		Max	mm ²	16
Mechanical life			cycles	5x10 ⁶
UL technical data				
Motor power for direct-on-line control				
for three-phase motor				
		120V	HP	7.5
		240V	HP	15
		480V	HP	25
		600V	HP	25
for single-phase motor				
		120V	HP	3
		240V	HP	10
Ambient conditions				
Temperature				
Operating temperature				
		min	°C	-25
		max	°C	+55
Storage temperature				
		min	°C	-40

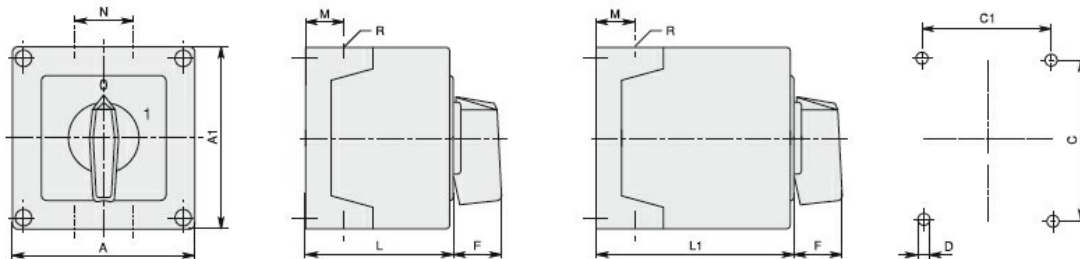
max °C +70

Resistance & Protection

Frontal IP degree IP65

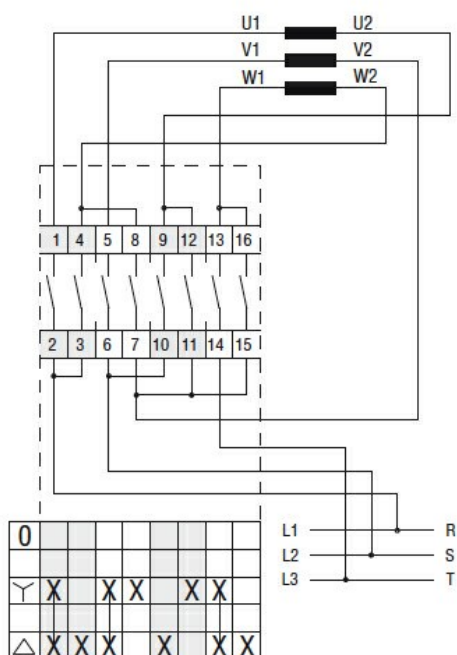
Terminals IP degree IP00

Dimensions



Series	Enclosure size	Number of elements		Dimensions										Cable entry	Protection degree
		L	L1	A	A1	C	C1	D	F	M	N	L	L1		
7GN12	75x75	1 - 2	3 - 4	75	75	50	64	4.5	19	14	28	57.5	79.8	4xPG13.5	IP65
7GN20		1 - 2	3 - 4												
7GN25		1	2 - 3												
7GN12	90x90	1 - 3	4 - 6	90	90	79	63	4.5	25	19	30	71.3	98.3	4xPG16	IP65
7GN20		1 - 3	4 - 6												
7GN25		1 - 2	3 - 4												
7GN32	110x110	1 - 2	3 - 4	110	110	98.4	83	4.5	32	21	39.5	85.5	119.5	4xPG21	IP65
7GN40		1	2 - 3												
7GN63		1 - 4	5 - 8												
7GN12	125x175	1 - 4	5 - 8	125	175	146	112	5.5	32	21	68	84.3	118.3	4xPG21 2xPG11	IP65
7GN20		1 - 4	5 - 8												
7GN25		1 - 3	4 - 5												
7GN32	180x254	1 - 3	4 - 5	180	254	120	190	5.5	32	35	76	121	175	4xPG29 2xPG11	IP65
7GN40		1 - 2	3 - 4												
7GN63		1 - 4	5 - 8												
7GN125	180x254	1 - 5	6 - 8	180	254	120	190	5.5	32	35	76	121	175	4xPG29 2xPG11	IP65
7GN20		1 - 4	5 - 7												
7GN25		1 - 3	4 - 6												
7GN32	180x254	1 - 2	3 - 4	180	254	120	190	5.5	32	35	76	121	175	4xPG29 2xPG11	IP65
7GN40		1 - 4	5 - 7												
7GN63		1 - 3	4 - 6												
7GN125	180x254	1 - 2	3 - 4	180	254	120	190	5.5	32	35	76	121	175	4xPG29 2xPG11	IP65
7GN20		1 - 4	5 - 7												
7GN25		1 - 3	4 - 6												

Wiring diagrams



Certifications and compliance

Compliance

ENCLOSED ROTARY CAM SWITCH 7GN SERIES, STAR-DELTA MOTOR STARTER SWITCH
63A IN PLASTIC ENCLOSURE 125X175MM WITH BLACK HANDLE

IEC/EN/BS 60947-1
IEC/EN/BS 60947-3
IEC/EN/BS 60947-5-1

Certificates

EAC

ETIM classification

ETIM 8.0

EC001029 -
Selector switch,
complete