

Product designation			Rotary cam switches
Product type designation			7GN40
General characteristics			
Switching diagram			25 - 1-phase motor reversing switch with spring return
N° of elements			2
Mounting form			O - Rear mounting with black handle
Contact characteristics			
Rated insulation voltage Ui			
	IEC/EN	V	690
	UL/CSA	V	600
Rated impulse withstand voltage Uimp			kV 6
Conventional free air thermal current Ith			
	IEC/EN	A	40
	UL/CSA	A	50
Rated operational voltage			V 480
Rated operational impulse voltage			kV 4
Maximum fuse size for short-circuit protection In (gG)			
	10kA	A	40
	15kA	A	40
	25kA	A	40
	50kA	A	40
	63kA	A	40
Rated short time current Icw			
	1s	kA	1000
Conductivity			10/5 mA/V
Operational current Ie IEC/EN			
AC1/AC21A		A	40
AC15			
	110V	A	25
	220/230V	A	22
	380/400V	A	12
	660/690V	A	2
Rated operational power in AC			
Three-phase AC-3			
	220/230V	kW	8
	380/440V	kW	15
	500/690V	kW	15
Single-phase AC-3			
	110V	kW	3
	220/230V	kW	6.5
	380/440V	kW	8
Three-phase AC23A			
	220/230V	kW	8
	380/440V	kW	18.5
	500/690V	kW	22
Single-phase AC23A			

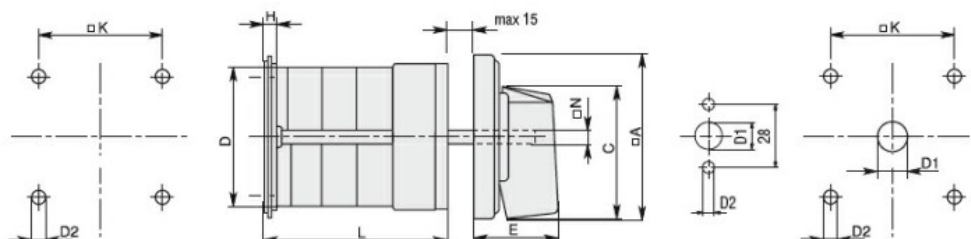
		110V	kW	3
		220/230V	kW	6
		380/440V	kW	11
Rated operational current in DC				
	DC21A	48V	A	40
		60V	A	40
		110V	A	6
		220V	A	0.9
	DC23A (poles in series)	24V	A	40 (1)
		48V	A	40 (2)
		60V	A	40 (3)
		110V	A	20 (3)
		220V	A	12 (4)
	DC13	24V	A	40
		48V	A	32
		60V	A	16
		110V	A	3
Power dissipation			W	2.0
Mechanical features				
Terminals screw				M4
Tightening torque for terminals max			Nm	1.2
Conductor size				
	AWG - Rigid cable	min	AWG	16
		Max	AWG	8
	AWG - Flexible cable	min	AWG	16
		Max	AWG	10
	Conductor size (IEC) - Flexible cable	min	mm ²	1.5
		Max	mm ²	6
	Conductor size (IEC) - Rigid cable	min	mm ²	1.5
		Max	mm ²	10
Mechanical life			cycles	5x10 ⁶
UL technical data				
Motor power for direct-on-line control				
	for three-phase motor	120V	HP	5
		240V	HP	10
		480V	HP	20
		600V	HP	20
	for single-phase motor	120V	HP	2
		240V	HP	5
Ambient conditions				
Temperature				
	Operating temperature	min	°C	-25
		max	°C	+55
	Storage temperature			

min °C -40
max °C +70

Resistance & Protection

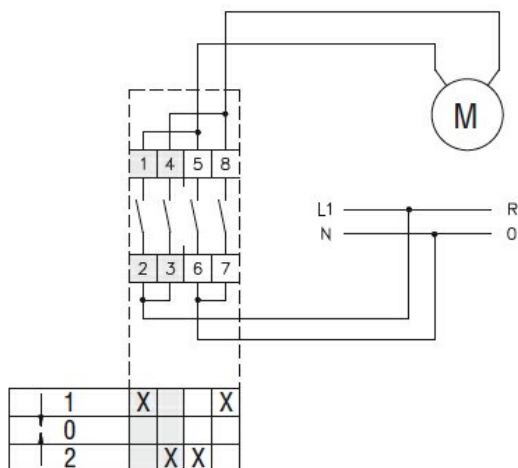
Frontal IP degree	IP40
Terminals IP degree	IP00

Dimensions



Series	Dimensions								L Number of elements											
	ØA	C	ØD	ØD2	E	H	ØK	ØN	1	2	3	4	5	6	7	8	9	10	11	12
7GN12	48	39.5	39	5	26.5	5	36	6	38.1	47.8	57.5	67.2	76.9	86.6	96.3	106	115.7	125.4	135.1	144.8
7GN20	48	39.5	39	5	26.5	5	36	6	38.1	47.8	57.5	67.2	76.9	86.6	96.3	106	115.7	125.4	135.1	144.8
7GN25	48	39.5	43	5	26.5	5	36	6	42.5	56.1	69.7	83.3	96.9	110.5	124.1	137.7	151.3	164.9	178.5	192.1
7GN32	65	53	58	5	34.5	5.5	48	7	48.5	63.6	78.7	93.8	108.9	124	139.1	154.2	169.3	184.4	199.5	214.6
7GN40	65	53	58	5	34.5	5.5	48	7	48.5	63.6	78.7	93.8	108.9	124	139.1	154.2	169.3	184.4	199.5	214.6
7GN63	65	53	62	6	34.5	7.5	68	7	53.3	71.4	89.5	107.6	125.7	143.8	161.9	180	198.1	216.2	234.3	252.4
7GN125	90	70.5	86	6	41.4	7.5	68	9	74.8	103.9	133	162.1	191.2	220.3	249.4	278.5	307.6	336.7	365.8	394.9

Wiring diagrams



Certifications and compliance

Compliance

CSA C22.2 n° 14
IEC/EN/BS 60947-1
IEC/EN/BS 60947-3
IEC/EN/BS 60947-5-1
UL60947-4-1

Certificates

cCSAus
EAC
UL

ETIM classification

ETIM 8.0

EC001029 -
Selector switch,
complete