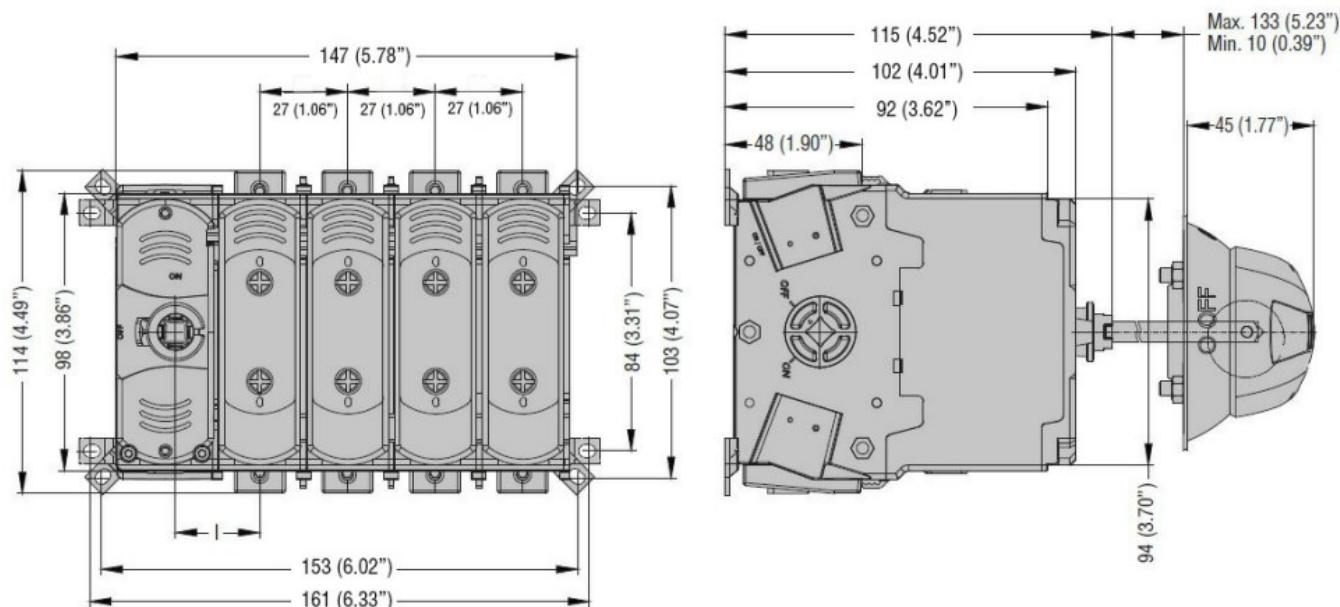




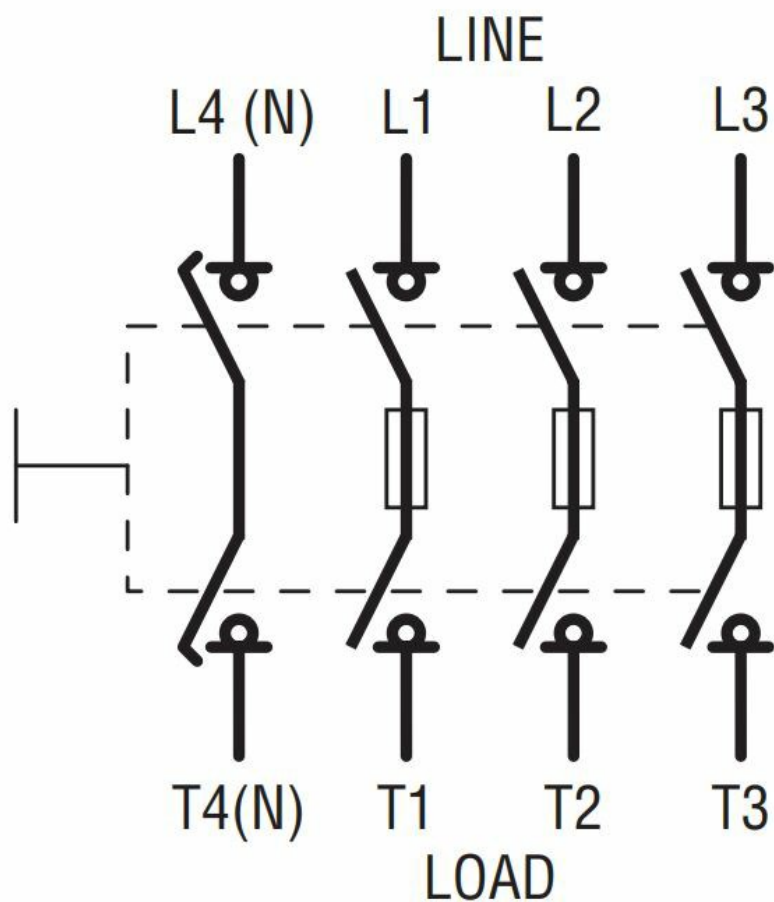
Product designation				Switch disconnecter with fuse
Product type designation				GEF
Type of fuse				NH
Number of poles	Nr.			4
Operating voltage type				AC
Contact characteristics				
IEC Conventional free air thermal current Ith	A			63
Rated insulation voltage Ui IEC/EN	V			1000
Rated impulse withstand voltage Uimp	kV			8
Operating current Ie				
AC21A	400V	A	63	
	500V	A	63	
AC22A	400V	A	63	
	500V	A	63	
AC23A	400V	A	63	
	500V	A	50	
Power dissipation per pole max	W			5.8
Conditional short-circuit current (rms)	kA			100
Making capacity AC23A 400V	A			630
Breaking capacity AC23A 400V	A			504
Mechanical life	cycles			10000
Mechanical features				
Operating position	normal allowable			Vertical plan Any
Fixing				Screw
Terminals	type			Hex terminals
Tightening torque for terminals	max	Nm	2	
	max	lbin	17.7	
Weight	g			1100
UL technical data				
Operating voltage max	V			500
Ambient conditions				
Operating temperature	min	°C	-25	
	max	°C	55	
Storage temperature	min	°C	-40	

	max	°C	70
Max altitude		m	3000
<b>Resistance &amp; Protection</b>			
Frontal IP degree			IP20
Terminals IP degree			IP20
Pollution degree			3

#### Dimensions



#### Wiring diagrams



#### Certifications and compliance

Compliance

IEC/EN/BS 60947-1

IEC/EN/BS 60947-3

Certifications

CE

UKCA

ETIM classification

ETIM 8.0

EC000216 -  
Switch  
disconnecter