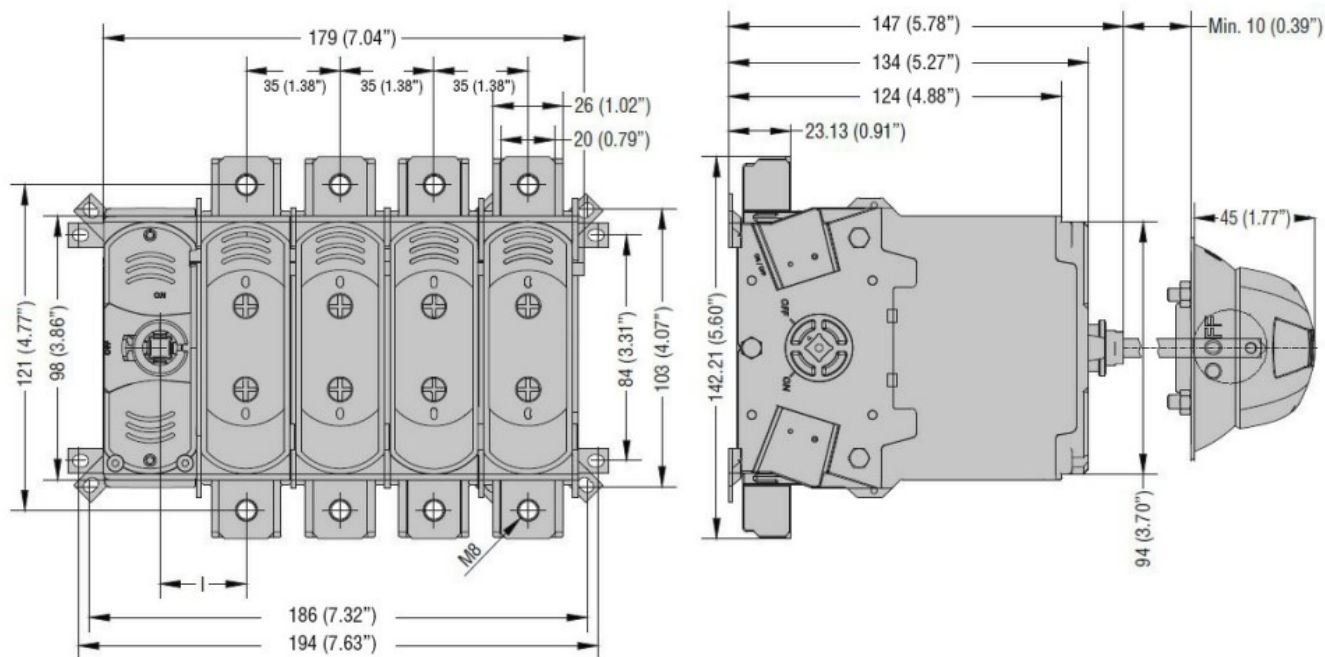


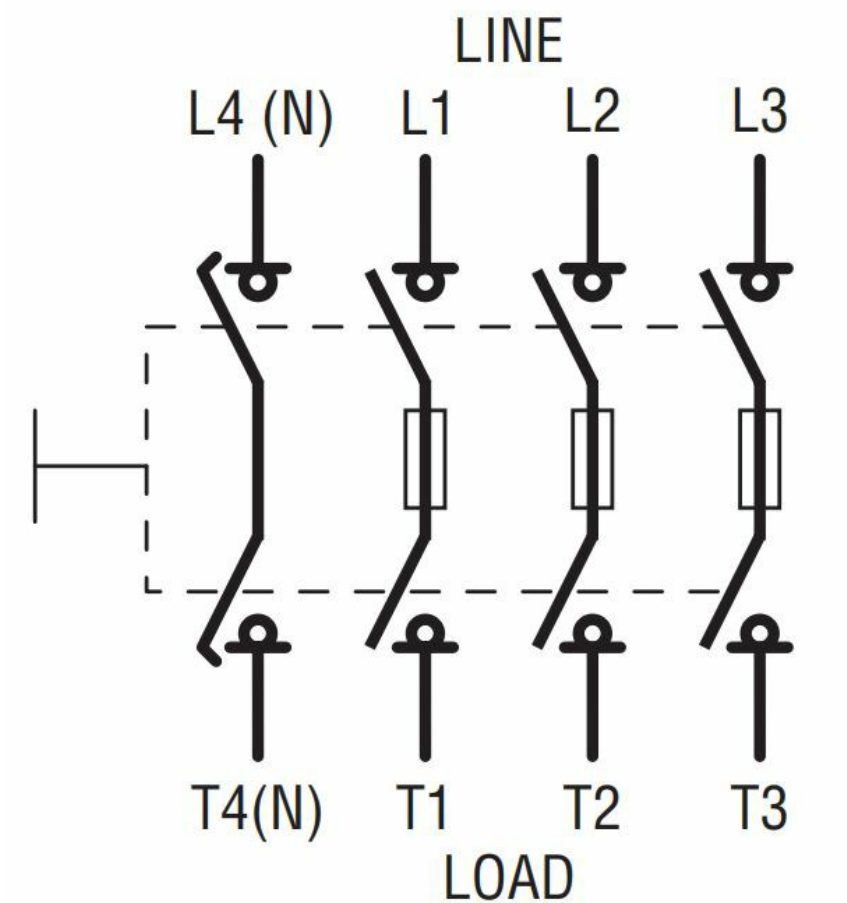


Product designation	Switch disconnecter with fuse		
Product type designation	GEF		
Type of fuse	NH		
Number of poles	Nr.	4	
Operating voltage type	AC		
Contact characteristics			
IEC Conventional free air thermal current I _{th}	A	160	
Rated insulation voltage U _i IEC/EN	V	1000	
Rated impulse withstand voltage U _{imp}	kV	8	
Operating current I _e			
AC21A	400V	A	160
	500V	A	160
AC22A	400V	A	160
	500V	A	125
AC23A	400V	A	160 (AC23B)
	500V	A	125
Power dissipation per pole max	W	11.2	
Conditional short-circuit current (rms)	kA	100	
Making capacity AC23A 400V	A	1600	
Breaking capacity AC23A 400V	A	1280	
Mechanical life	cycles	8000	
Mechanical features			
Operating position	normal allowable	Vertical plan Any	
Fixing		Screw	
Terminals	type	Lug terminals or bars	
	width	mm	25
	height	mm	3
	screw		M8
Tightening torque for terminals	max	Nm	6
	max	lbin	53
Weight		g	1600
UL technical data			
Operating voltage max	V	500	
Ambient conditions			
Operating temperature	min	°C	-25

	max	°C	55
Storage temperature	min	°C	-40
	max	°C	70
Max altitude	m		3000
Resistance & Protection			
Pollution degree			3
Dimensions			



Wiring diagrams



Certifications and compliance

Compliance

IEC/EN/BS 60947-1

IEC/EN/BS 60947-3

Certifications

CE

UKCA

ETIM classification

ETIM 8.0

EC000216 -
Switch
disconnecter