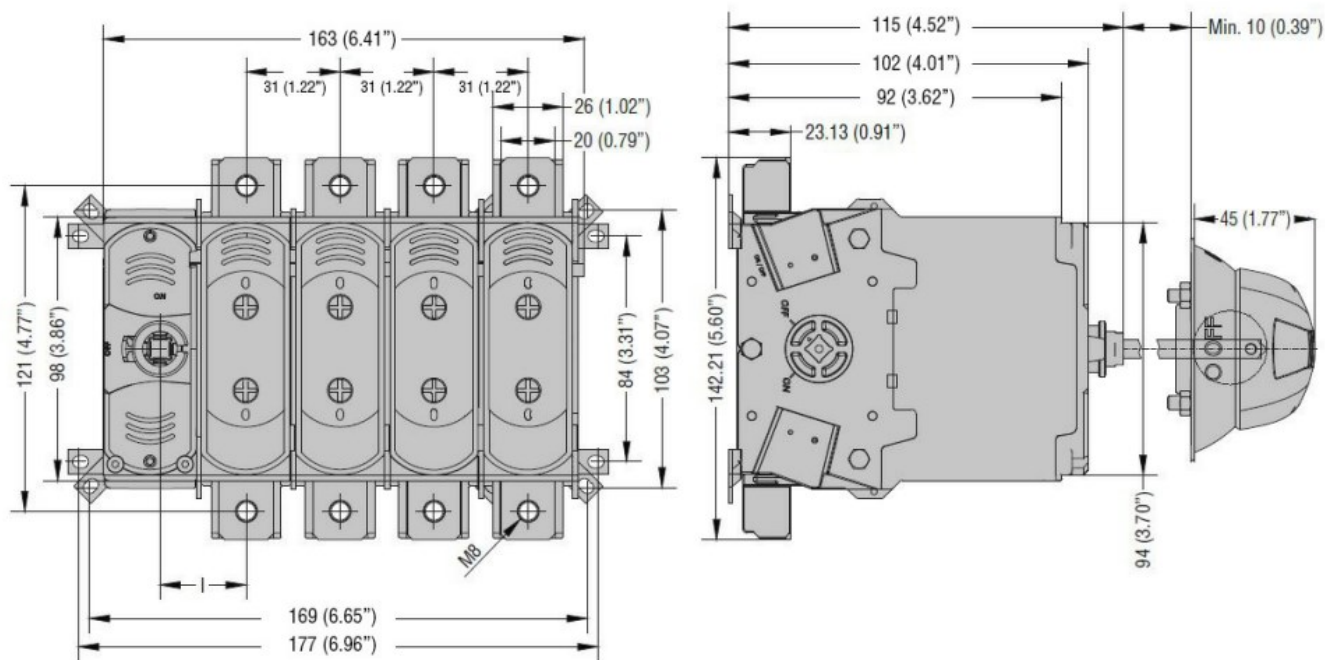




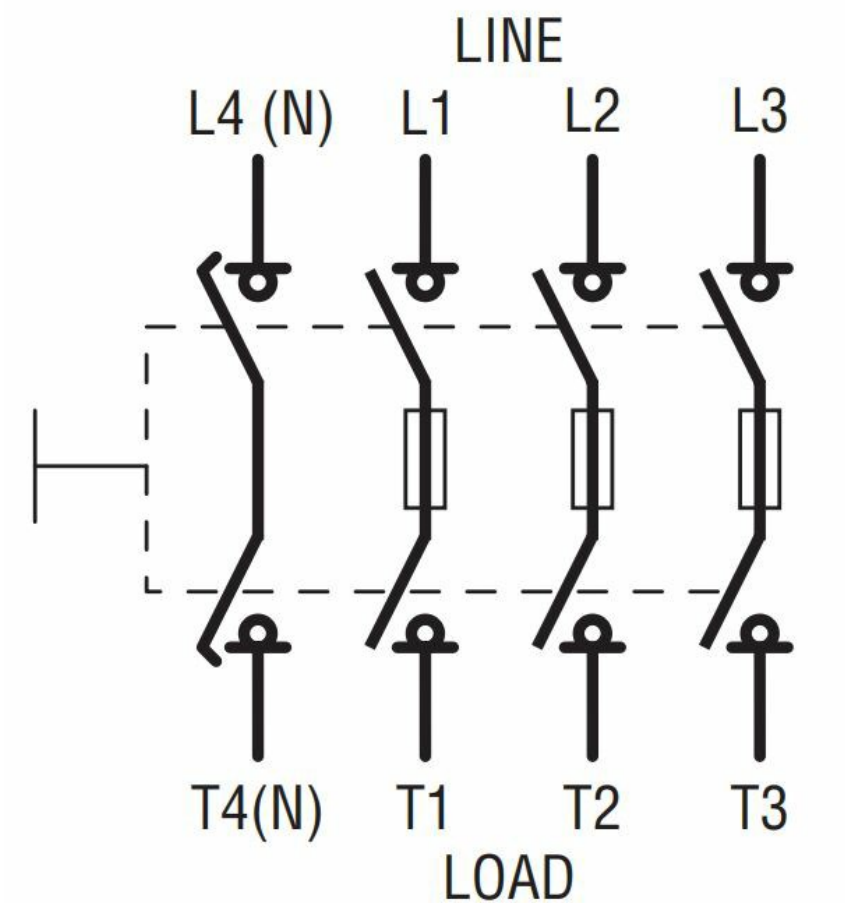
Product designation	Switch disconnecter with fuse		
Product type designation	GEF		
Type of fuse	NH		
Number of poles	Nr.	4	
Operating voltage type	AC		
Contact characteristics			
IEC Conventional free air thermal current Ith	A	100	
Rated insulation voltage Ui IEC/EN	V	1000	
Rated impulse withstand voltage Uimp	kV	8	
Operating current Ie			
AC21A	400V	A	100
	500V	A	100
AC22A	400V	A	100
	500V	A	80
AC23A	400V	A	100
	500V	A	63
Power dissipation per pole max	W	6.6	
Conditional short-circuit current (rms)	kA	100	
Making capacity AC23A 400V	A	800	
Breaking capacity AC23A 400V	A	640	
Mechanical life	cycles	10000	
Mechanical features			
Operating position	normal allowable	Vertical plan Any	
Fixing	Screw		
Terminals	type	Hex terminals	
Tightening torque for terminals	max	Nm	2
	max	lbin	17.7
Weight	g		1300
UL technical data			
Operating voltage max	V		500
Ambient conditions			
Operating temperature	min	°C	-25
	max	°C	55
Storage temperature	min	°C	-40

	max	°C	70
Max altitude		m	3000
Resistance & Protection			
Frontal IP degree			IP20
Terminals IP degree			IP20
Pollution degree			3

Dimensions



Wiring diagrams



Certifications and compliance

Compliance

IEC/EN/BS 60947-1

IEC/EN/BS 60947-3

Certifications

CE

UKCA

ETIM classification

ETIM 8.0

EC000216 -
Switch
disconnecter